

CTLD Mission Editor Setup and In Game F-Key Menu Commands

- Red Boxes highlight action required areas in Mission Editor setup

FILE

MIS

OBJ

MAP

AIRPLANE GROUP

NAME

Hercules

CONDITION

%

< > 100

COUNTRY

USA

COMBAT

TASK

Nothing

UNIT

< > 1

OF

< > 1

TYPE

Hercules

SKILL

Client

PILOT

transport1

TAIL #

010

RADIO

✓

FREQUENCY

254

MHz

AM

CALLSIGN

Enfield

1

1

HIDDEN ON MAP

HIDDEN ON PLANNER

HIDDEN ON MFD

LATE ACTIVATION

WAYPOINT

<

>

OF

1

NAME

Hercules

TYPE

Takeoff from par

PRK

01

ALTITUDE

< > 43

feet

MSL

Abov

SPEED

< > 270

kts

GS

✓

MACH

< > 0.405

START

8

:

0

:

0

:

0

/

0

Fix time

✓

ADD

EDIT

DEL

ADVANCED (WAYPOINT ACTIONS)

UNIT LIST

Show Hidden Units

✓ Helicopters

✓ Planes

✓ Vehicles

✓ Ships

✓ Statics

ALL

0

1

0

0

1

Total: 2 units

GROUP NAME	UNIT NAME	UNIT TYPE	UNIT ID	COUNTRY	STATUS	MODULE
Hercules	transport1	Hercules	1	USA		Hercules
Static Warehouse-1	Static Warehouse-1	Warehouse	2	USA		

MISSION EDITOR

FILEVIEWEDITFLIGHTCAMPAIGNCUSTOMIZEMISSION GENERATORMISC

FILE

MIS

OBJ

MAP

TRIGGERS

TRIGGERS

CLONE ^ v

CONDITIONS

CLONE ^ v

ACTIONS

CLONE ^ v

4 MISSION START (MIST)

4 MISSION START (CTLD)

4 MISSION START (Herc Cargo)

DO SCRIPT FILE (mist_4_4_90.lua)

MESSAGE TO ALL (MIST loaded, 10, false, 3)

SOUND TO ALL (radiobeep.ogg, 3)

NEW

DELETE

NEW

OR

NEW

TYPE:

4 MISSION START

NAME:

MIST

COLOR

R < > 0

G < > 255

B < > 0

INITIALIZATION SCRIPT

OPEN

RESET

CODE

DFLT

Herc_Cargo_With_Proper_CTLD_Examf

LAT N 42°14'45.23"

LONG E 42°02'16.17"

ALT 43

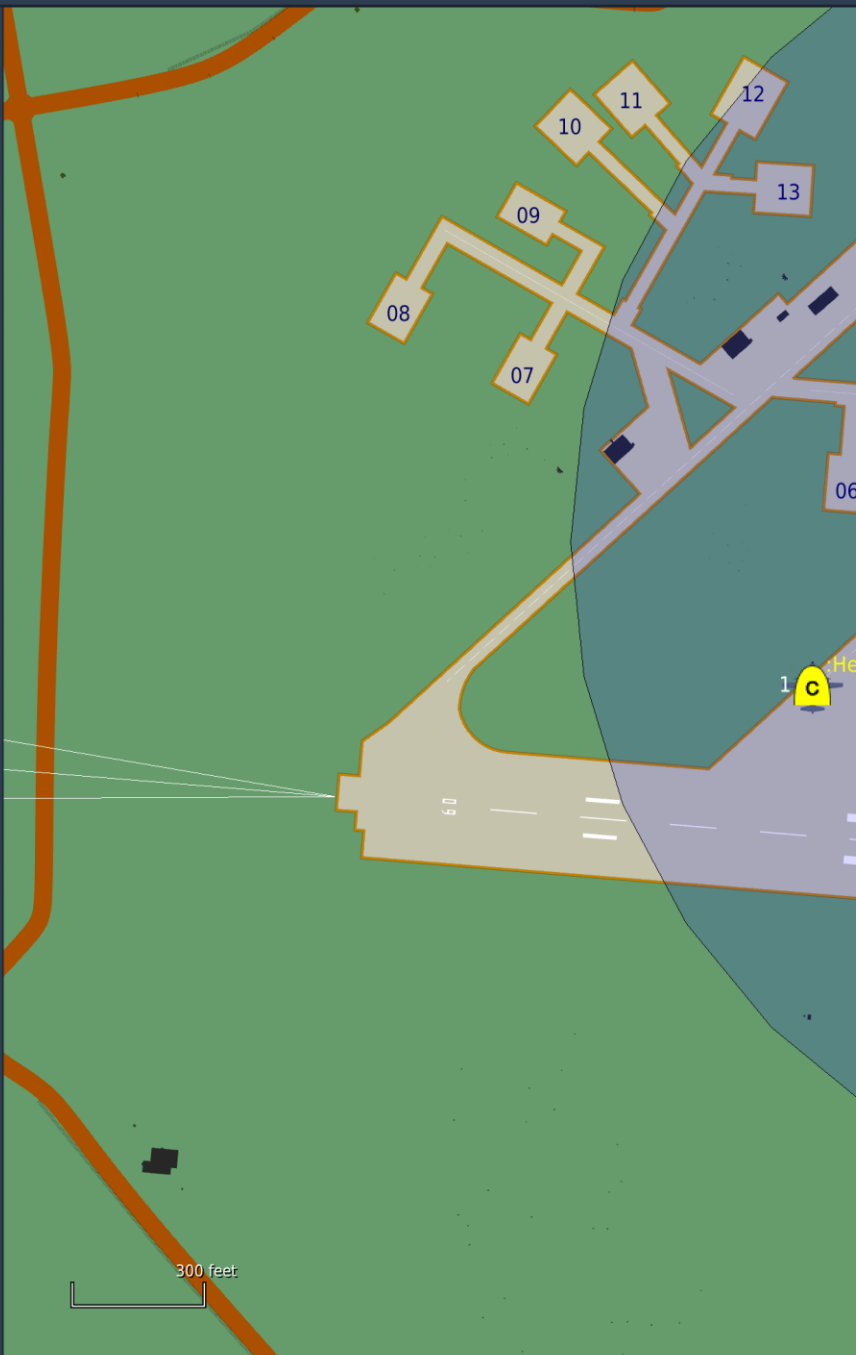
PAN/SELECT

MAP

SAT

ALT

25.02.2021 10:29:00



TRIGGERS

CLONE

^ v

CONDITIONS

CLONE

ACTIONS

CLONE

^

4 MISSION START (MIST)

4 MISSION START (CTLD)

DO SCRIPT FILE (mist_4_4_90.lua)

MESSAGE TO ALL (MIST loaded, 10, false, 3)

SOUND TO ALL (radiobeeep.ogg, 3)

NEW

DELETE

NEW

OR

NEW

DELETE

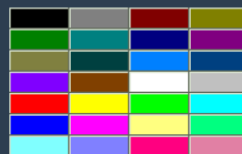
TYPE:

4 MISSION START

NAME:

MIST

COLOR



G < > 25

INITIALIZATION SCRIPT

OPEN

RESET

CODE

MISSION EDITOR

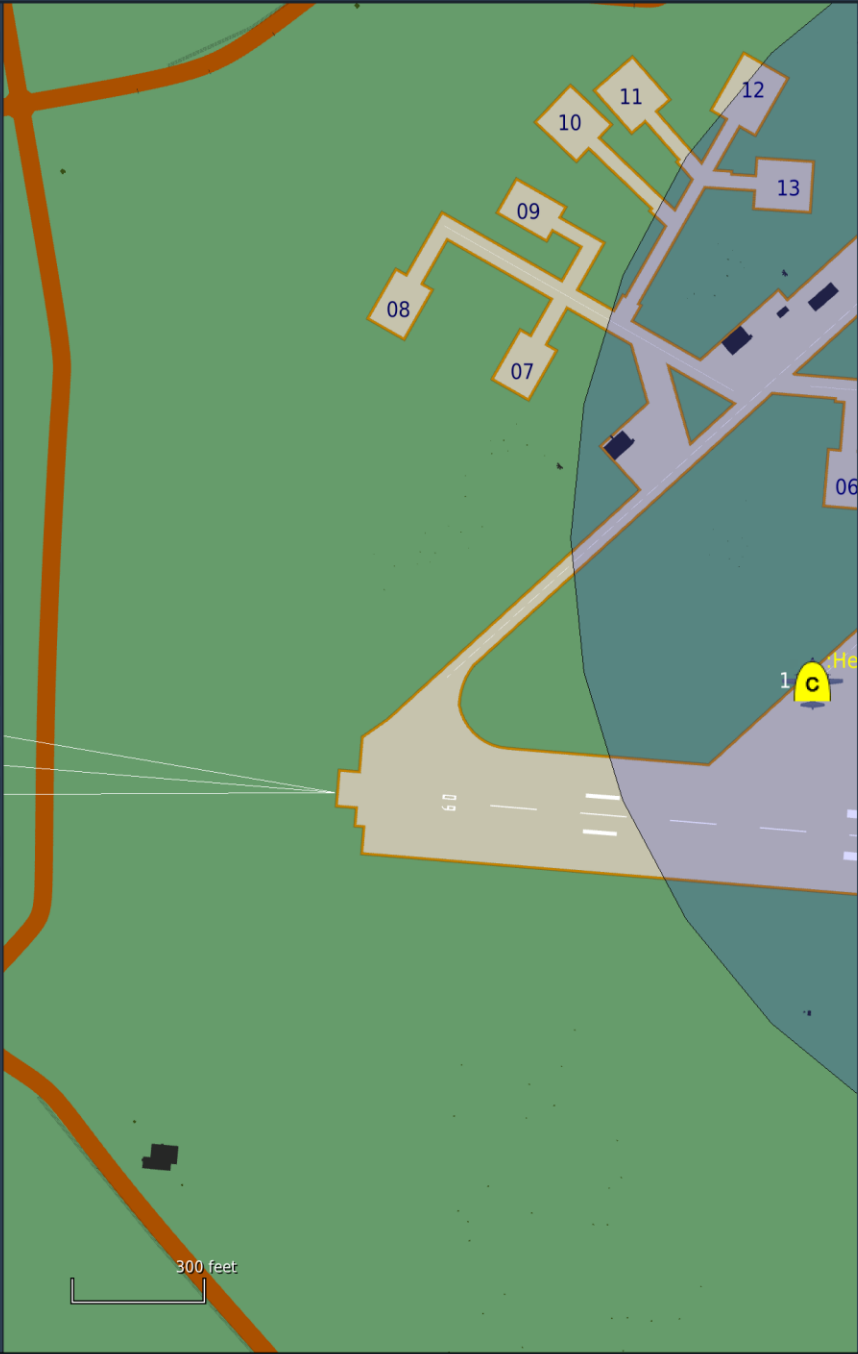
FILEVIEWEDITFLIGHTCAMPAIGNCUSTOMIZEMISSION GENERATORMISC

FILE

MIS

OBJ

MAP



TRIGGERS

TRIGGERS

CLONE

4 MISSION START (MIST)

4 MISSION START (CTLD)

4 MISSION START (Herc Cargo)

NEW

DELETE

TYPE: 4 MISSION START

NAME: MIST

COLOR

R < > 0

G < > 255

B < > 0

INITIALIZATION SCRIPT

OPEN

RESET

CONDITIONS

CLONE

NEW

OR

ACTIONS

CLONE

DO SCRIPT FILE (mist_4_4_90.lua)

MESSAGE TO ALL (MIST loaded, 10, false, 3)

SOUND TO ALL (radiobeep.ogg, 3)

NEW

DELETE

ACTION: MESSAGE TO ALL

TEXT: MIST loaded

SECONDS: < > 10

CLEARVIEW

START DELAY < > 3

CODE

DFLT

Herc_Cargo_With_Proper_CTLD_Examf

LAT N 42°14'45.23"

LONG E 42°02'16.17"

ALT 43

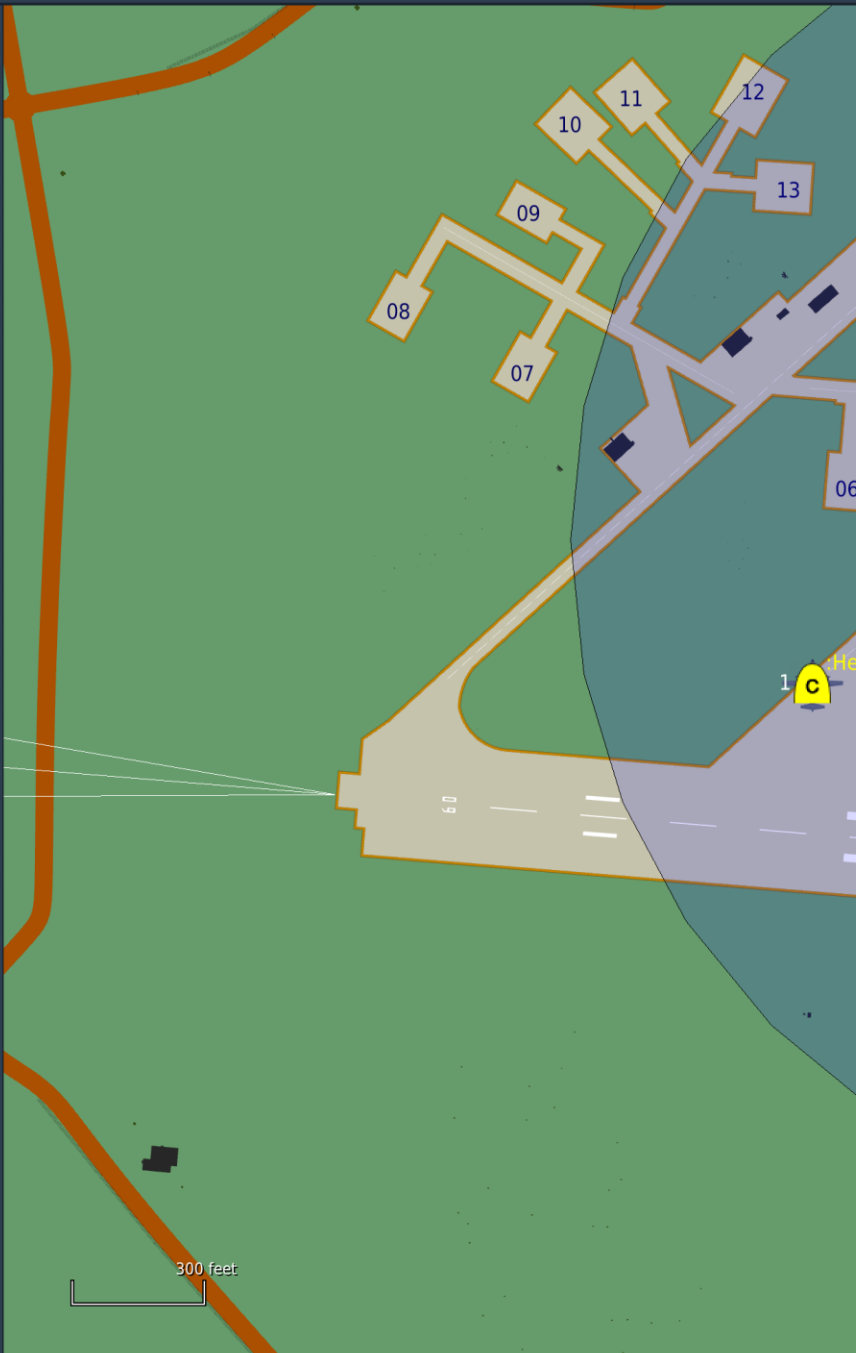
PAN/SELECT

MAP

SAT

ALT

25.02.2021 10:29:10



TRIGGERS

CLONE

^ v

CONDITIONS

CLONE

^

ACTIONS

CLONE

^ v

4 MISSION START (MIST)

4 MISSION START (CTLD)

NEW

DELETE

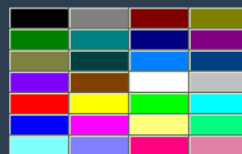
TYPE:

4 MISSION START

NAME:

MIST

COLOR



G < > 25

INITIALIZATION SCRIPT

OPEN

RESET

CODE

PAN/SELECT

MAP

SAT

ALT

MISSION EDITOR

FILEVIEWEDITFLIGHTCAMPAIGNCUSTOMIZEMISSION GENERATORMISC

FILE

MIS

OBJ

MAP

300 feet

TRIGGERS

TRIGGERS

4 MISSION START (MIST)

4 MISSION START (CTLD)

4 MISSION START (Herc Cargo)

NEW

DELETE

TYPE:4 MISSION START

NAME:CTLD

COLOR

R < > 0

G < > 255

B < > 255

INITIALIZATION SCRIPT

OPEN

RESET

CODE

CONDITIONS

CLONE

NEW

OR

ACTIONS

CLONE

NEW

DO SCRIPT FILE (CTLD.lua)

DFLT

Herc_Cargo_With_Proper_CTLD_Examf

LAT N 42°14'47.37"

LONG E 42°02'17.48"

ALT 43

PAN/SELECT

MAP

SAT

ALT

25.02.2021 10:29:19

MISSION EDITOR

FILEVIEWEDITFLIGHTCAMPAIGNCUSTOMIZEMISSION GENERATORMISC

FILE

MIS

OBJ

MAP

300 feet

TRIGGERS

TRIGGERS

CLONE

4 MISSION START (MIST)

4 MISSION START (CTLD)

4 MISSION START (Herc Cargo)

NEW

DELETE

TYPE:

4 MISSION START

NAME:

CTLD

COLOR

R < > 0

G < > 255

B < > 255

INITIALIZATION SCRIPT

OPEN

RESET

CONDITIONS

CLONE

NEW

OR

ACTIONS

CLONE

DO SCRIPT FILE (CTLD.lua)

NEW

DELETE

ACTION:

DO SCRIPT FILE

FILE:

CTLD.lua

OPEN

DFLT

Herc_Cargo_With_Proper_CTLD_Examf

LAT N 42°14'47.37"

LONG E 42°02'17.48"

ALT 43

PAN/SELECT

MAP

SAT

ALT

25.02.2021 10:29:23



TRIGGERS

CLONE

^ v

CONDITIONS

CLONE

ACTIONS

CLONE

^ v

4 MISSION START (CTLD)

NEW

DELETE

NEW

OR

NEW

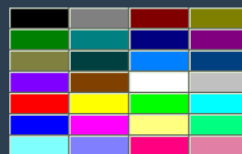
TYPE:

4 MISSION START

NAME:

Herc Cargo

COLOR



G < > 128

B < > 255

INITIALIZATION SCRIPT

OPEN

RESET

CODE

MISSION EDITOR

FILEVIEWEDITFLIGHTCAMPAIGNCUSTOMIZEMISSION GENERATORMISC

FILE

MIS

OBJ

MAP

4 MISSION START (MIST)

4 MISSION START (CTLD)

4 MISSION START (Herc Cargo)

NEW

DELETE

TYPE:

NAME:

COLOR

R < > 0

G < > 128

B < > 255

INITIALIZATION SCRIPT

OPEN

RESET

CODE

CONDITIONS

NEW

OR

ACTIONS

NEW

DELETE

ACTION:

FILE:

DO SCRIPT FILE (Hercules_Cargo.lua)

DO SCRIPT FILE

Hercules_Cargo.lua

OPEN

300 feet

DFLT

Herc_Cargo_With_Proper_CTLD_Examf

LAT N 42°14'47.37"

LONG E 42°02'17.48"

ALT 43

PAN/SELECT

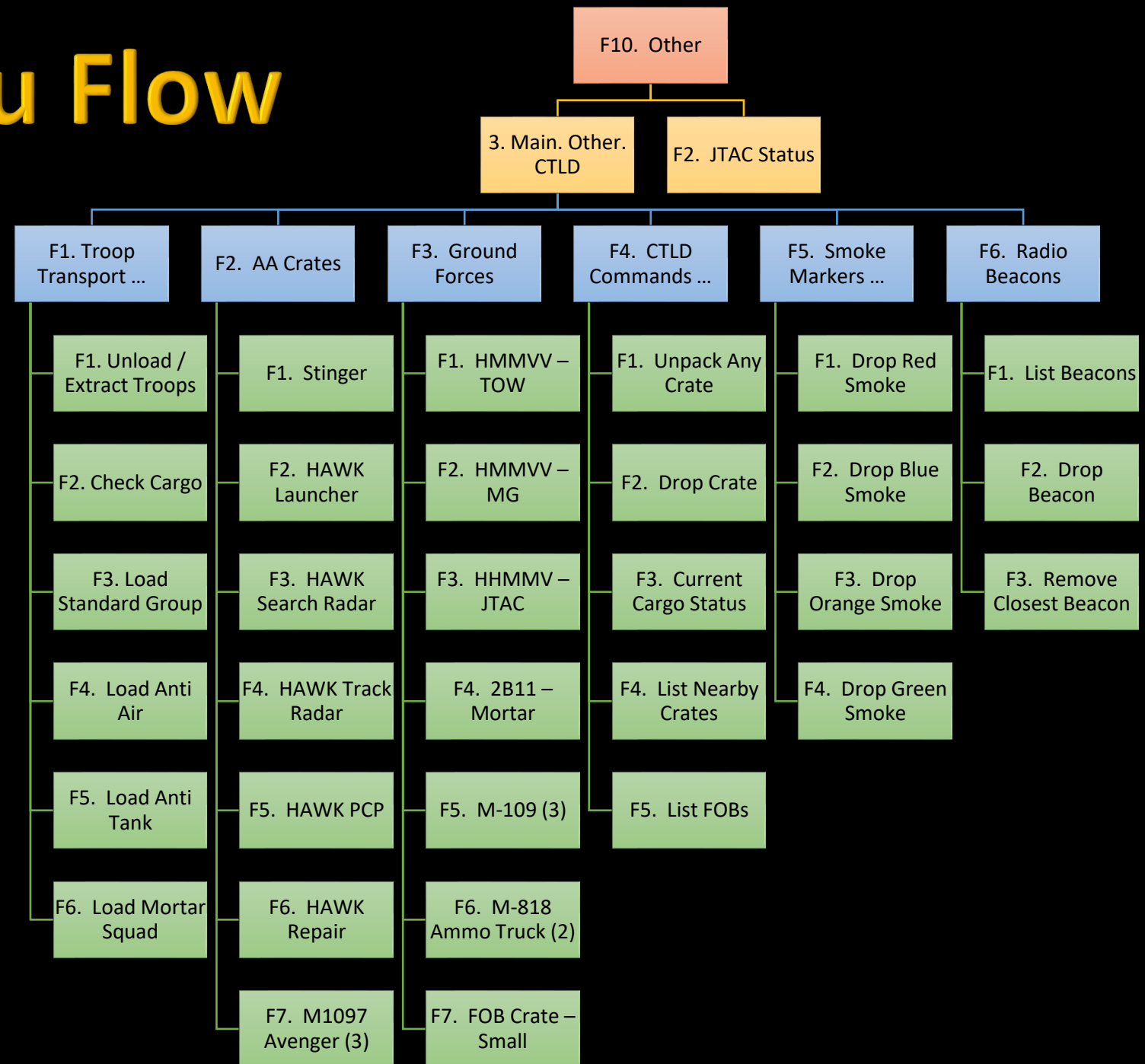
MAP

SAT

ALT

25.02.2021 10:29:33

CTLD Menu Flow



Cargo_CTLD Mission Editor Setup and In Game F-Key Menu Commands

- Red Boxes highlight action required areas in Mission Editor setup

MISSION EDITOR

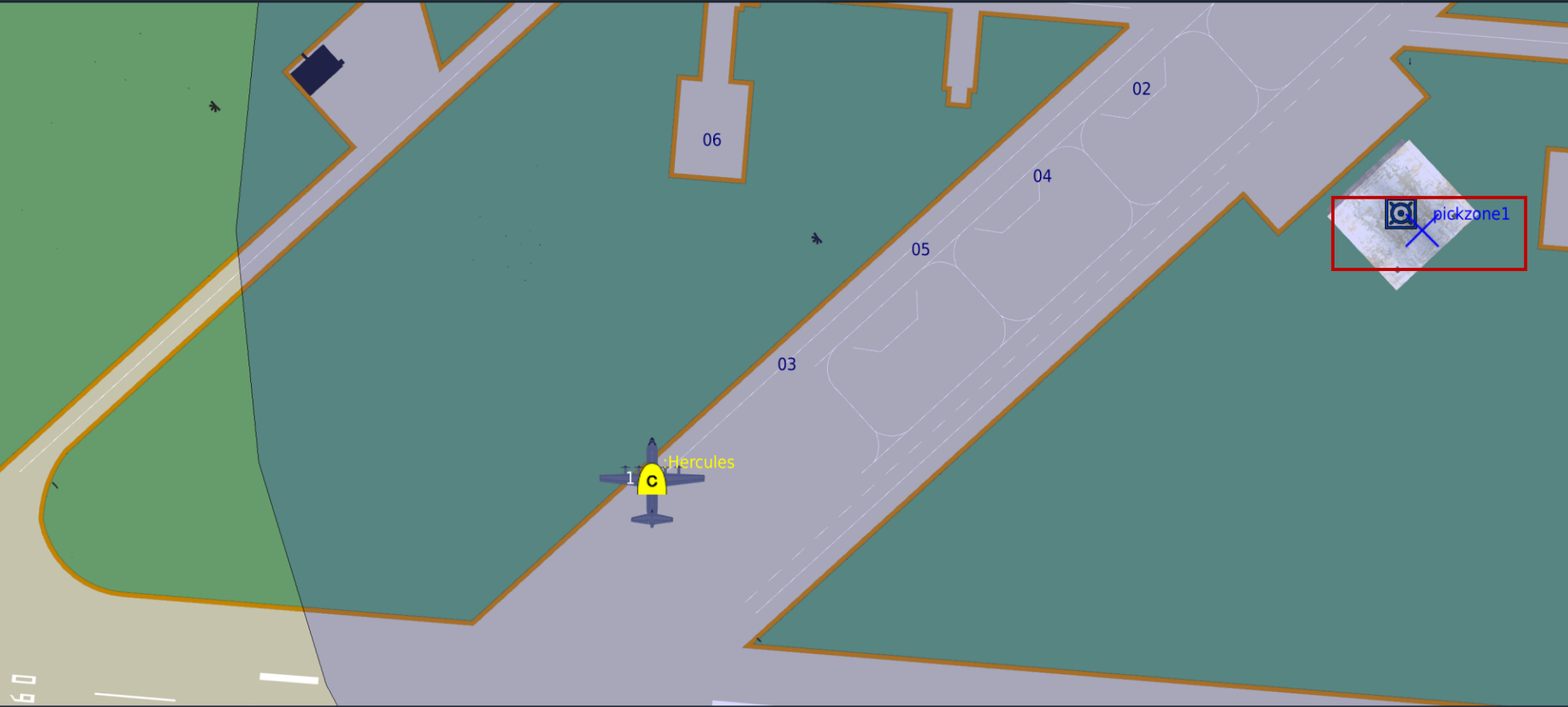
FILEVIEWEDITFLIGHTCAMPAIGNCUSTOMIZEMISSION GENERATORMISC

FILE

MIS

OBJ

MAP



AIRPLANE GROUP

NAME

Hercules

CONDITION

%

< > 100

COUNTRY

USA

COMBAT

TASK

Nothing

UNIT

< > 1

OF

< > 1

TYPE

Hercules

SKILL

Client

PILOT

transport1

TAIL #

010

RADIO

☒

FREQUENCY

254

MHz

AM

CALLSIGN

Enfield

1

1

☐ HIDDEN ON MAP

☐ HIDDEN ON PLANNER

☐ HIDDEN ON MFD

☐ LATE ACTIVATION

WAYPOINT

<

>

OF

1

NAME

Hercules

TYPE

Takeoff from parl

PRK

01

ALTITUDE

< > 43

feet

MSL

Abov

SPEED

< > 270

kts

GS

☒

MACH

< > 0.405

START

8

:

0

:

0

:

0

Fix time

☒

ADD

EDIT

DEL

ADVANCED (WAYPOINT ACTIONS)

UNIT LIST

☐ Show Hidden Units

☒ Helicopters

☒ Planes

☒ Vehicles

☒ Ships

☒ Statics

ALL

0

1

0

0

1

Total:

2

units

GROUP NAME	UNIT NAME	UNIT TYPE	UNIT ID	COUNTRY	STATUS	MODULE
Hercules	transport1	Hercules	1	USA		Hercules
logistic1	logistic1	Warehouse	2	USA		

DFLT

Herc_Cargo_CTLD_Example.miz

LAT

N 42°14'33.49"

LONG

E 42°02'10.90"

ALT

43

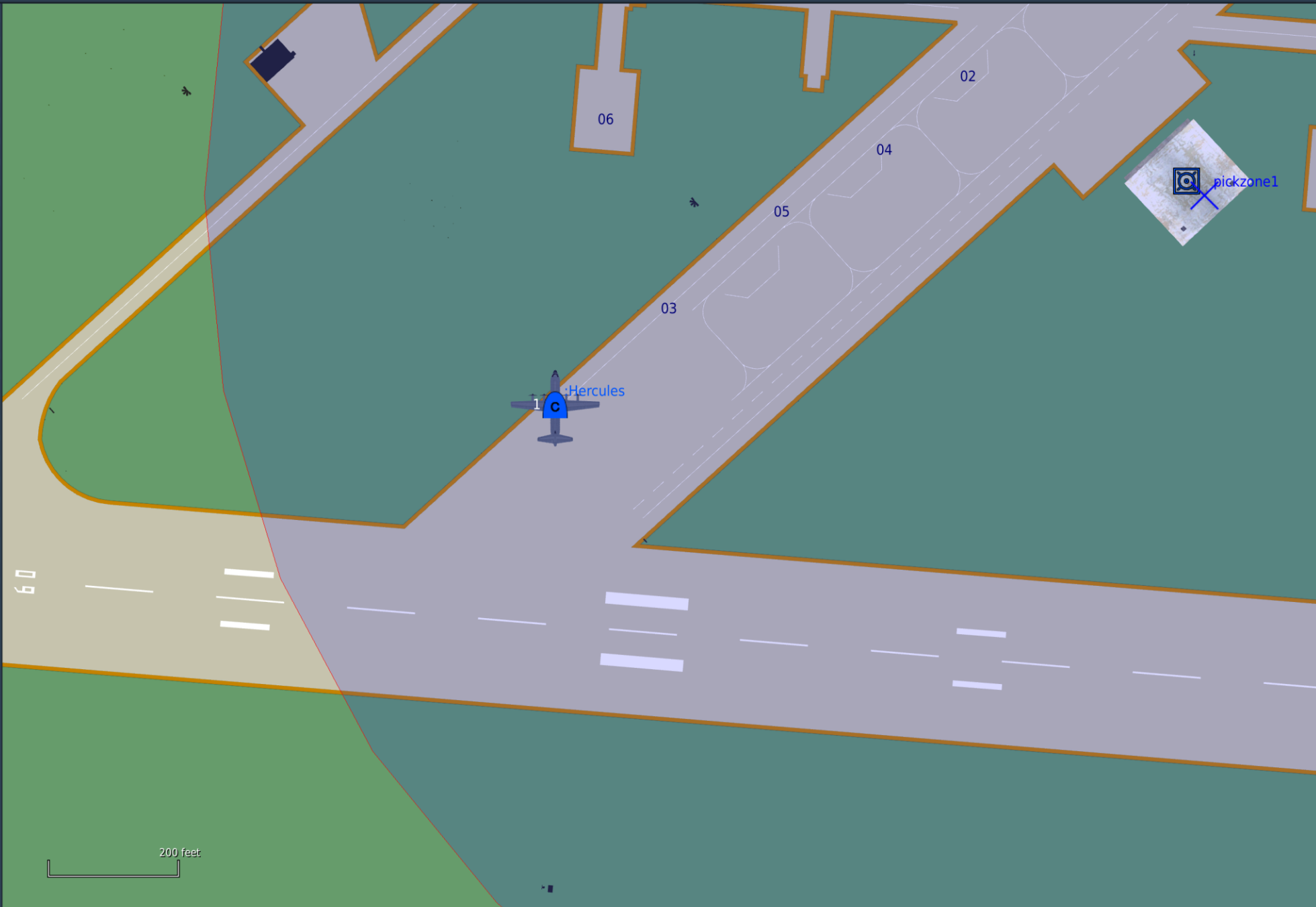
PAN/SELECT

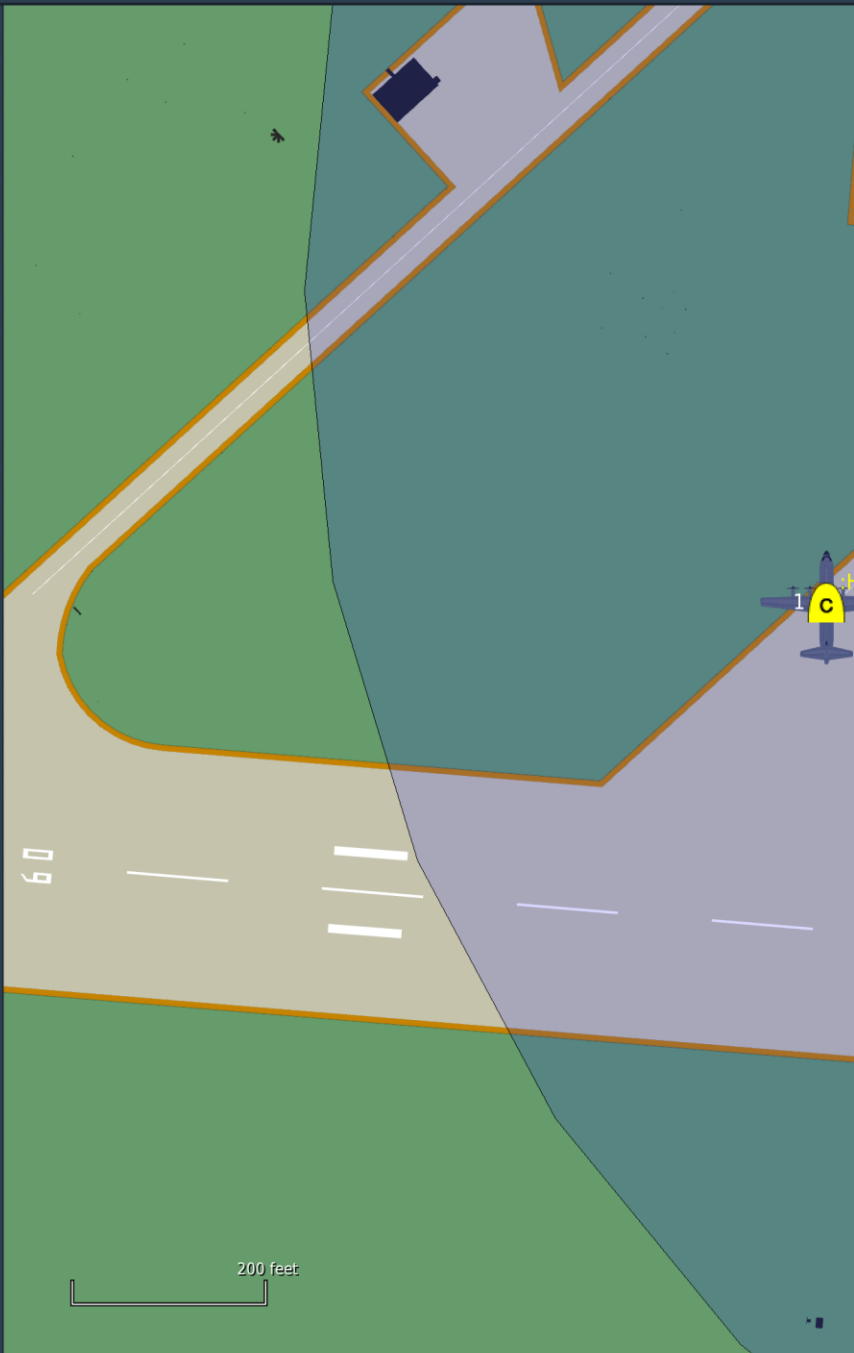
MAP

SAT

ALT

25.02.2021 10:24:02

[illegible]



TRIGGERS

CLONE

CONDITIONS

CLONE

ACTIONS

CLONE

^

4 MISSION START (MIST)

4 MISSION START (CTLD)

DO SCRIPT FILE (mist_4_4_90.lua)

MESSAGE TO ALL (MIST loaded, 10, false, 1)

SOUND TO ALL (radiobeeep.ogg, 0)

NEW

DELETE

NEW

OR

NEW

TYPE:

4 MISSION START

NAME:

MIST

COLOR

R < > 0

G < > 25

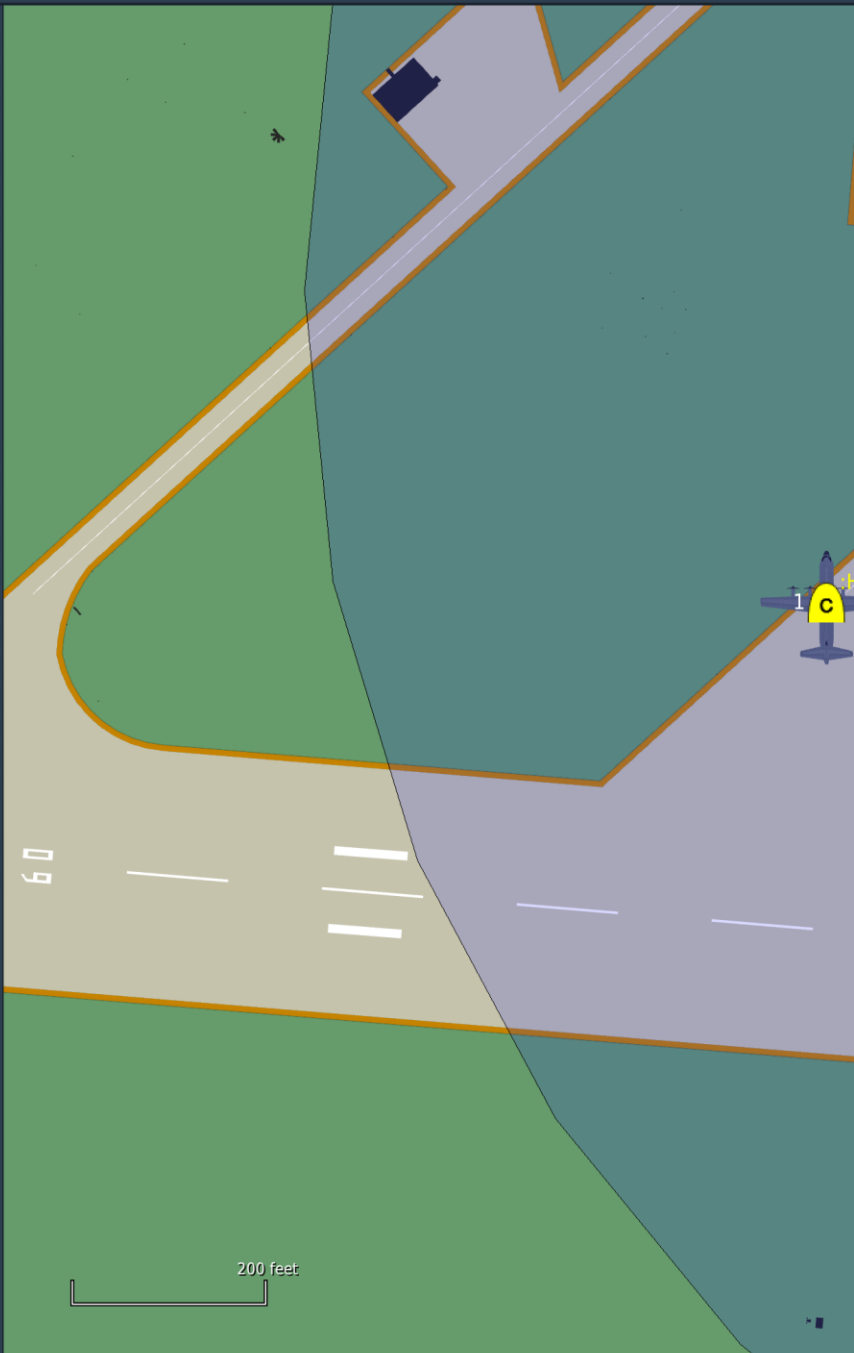
B < > 0

INITIALIZATION SCRIPT

OPEN

RESET

CODE



TRIGGERS

CLONE

^ v

CONDITIONS

CLONE

ACTIONS

CLONE

 $\wedge \vee$

4 MISSION START (MIST)

4 MISSION START (CTLD)

DO SCRIPT FILE (mist_4_4_90.lua)

MESSAGE TO ALL (MIST loaded, 10, false, 1)

SOUND TO ALL (radiobeeep.ogg, 0)

NEW

DELETE

NEW

OR

NEW

DELETE

TYPE:

4 MISSION START

NAME:

MIST

COLOR

G < > 25

INITIALIZATION SCRIPT

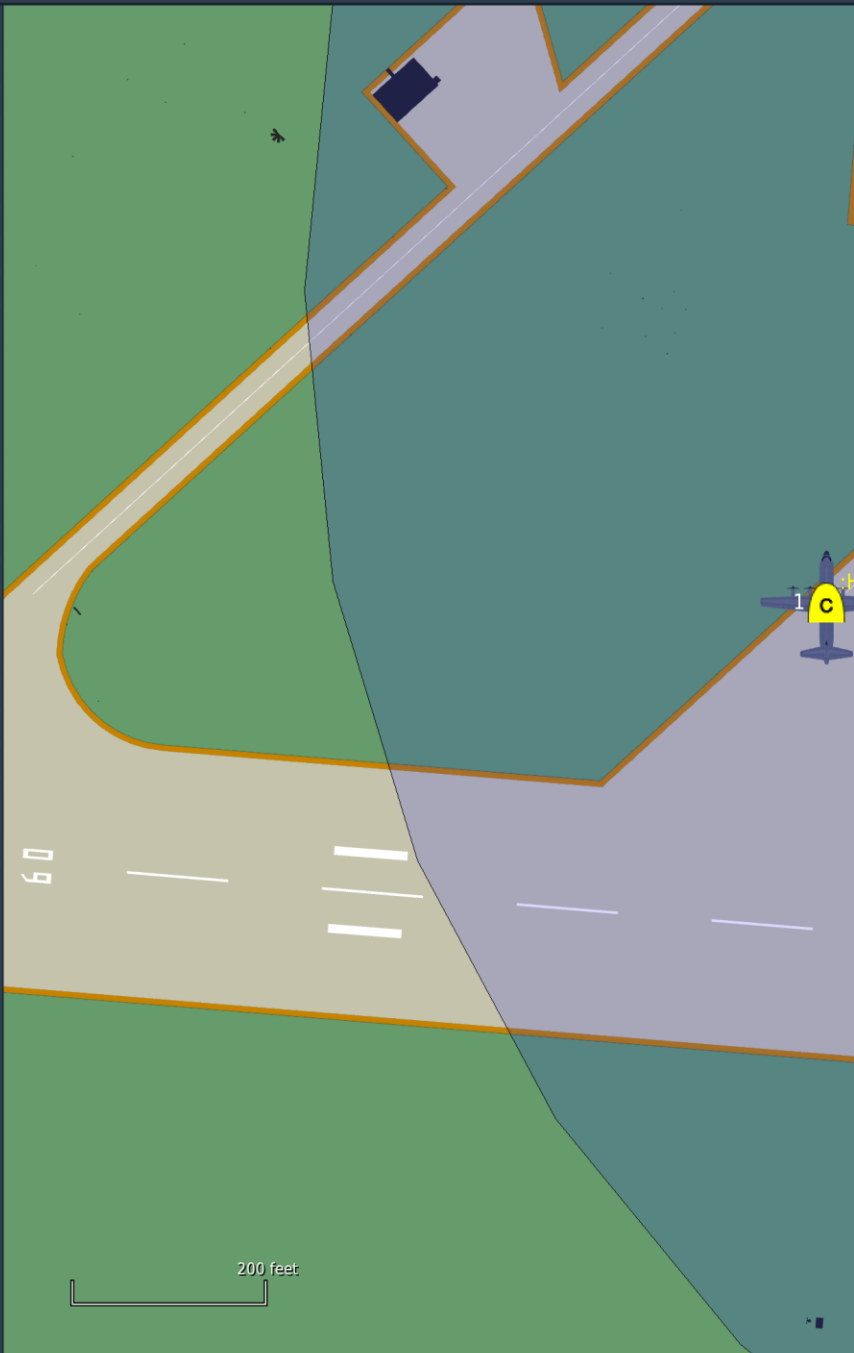
OPEN

RESET

CODE

CODE

OPEN



TRIGGERS

4 MISSION START (MIST)

NEW

TYPE:

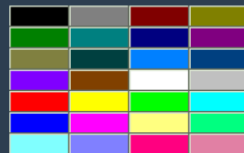
4 MISSION START

NAME:

MIST

COLOR

G < > 255



DELETE

NEW

OR

ACTIONS

```
DO SCRIPT FILE (mist_4_4_90.lua)
MESSAGE TO ALL (MIST loaded, 10, false, 1)
SOUND TO ALL (radiobeep.ogg, 0)
```

ACTION:

MESSAGE TO ALL

TEXT:

MIST loaded

SECONDS:

< > 10

CLEARVIEW

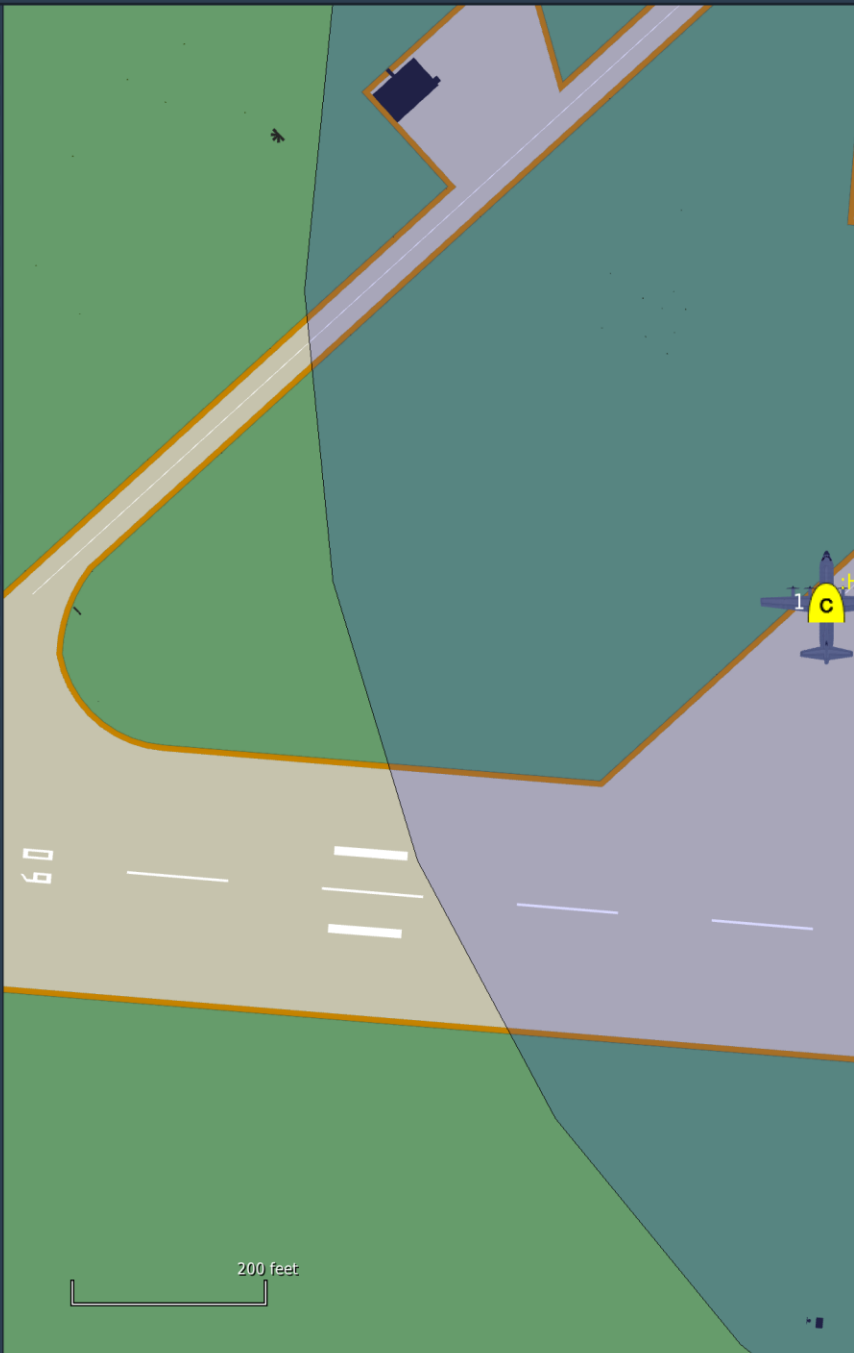
START DELAY

INITIALIZATION SCRIPT

OPEN

RESET

CODE



TRIGGERS

4 MISSION START (MIST)

NEW

TYPE:

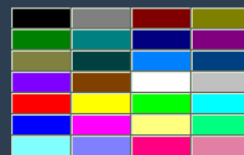
4 MISSION START

NAME:

MIST

COLOR

G < > 25



INITIALIZATION SCRIPT

OPEN

RESET

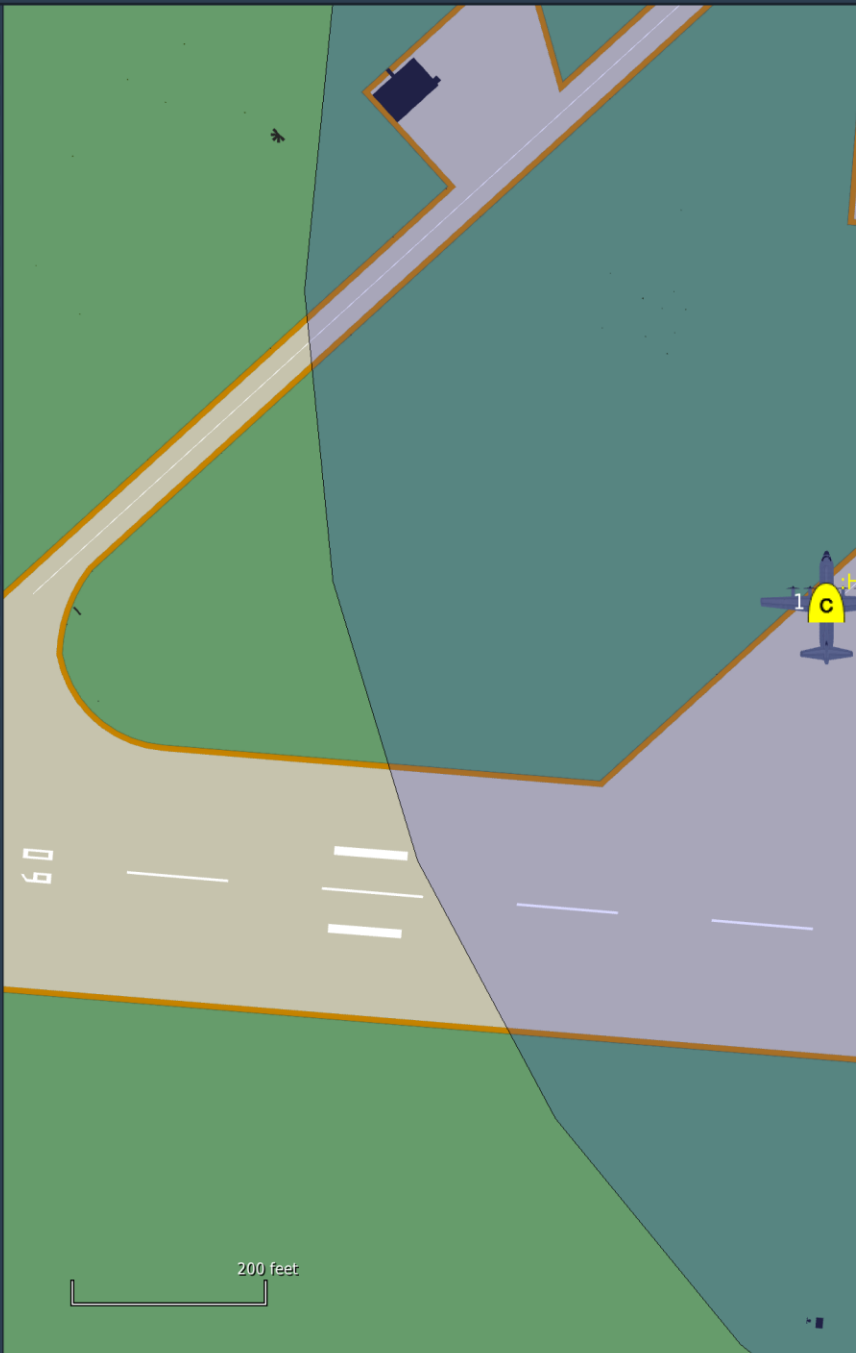
CODE

PAN/SELECT

MAP

SAT

ALT



TRIGGERS

CLONE

^ v

CONDITIONS

CLONE

ACTIONS

CLONE

^ v

4 MISSION START (MIST)

4 MISSION START (CTLD)

NEW

DELETE

NEW

OR

NEW

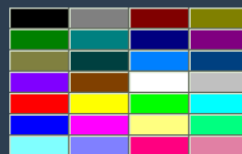
TYPE:

4 MISSION START

NAME:

CTLD

COLOR



G < > 25

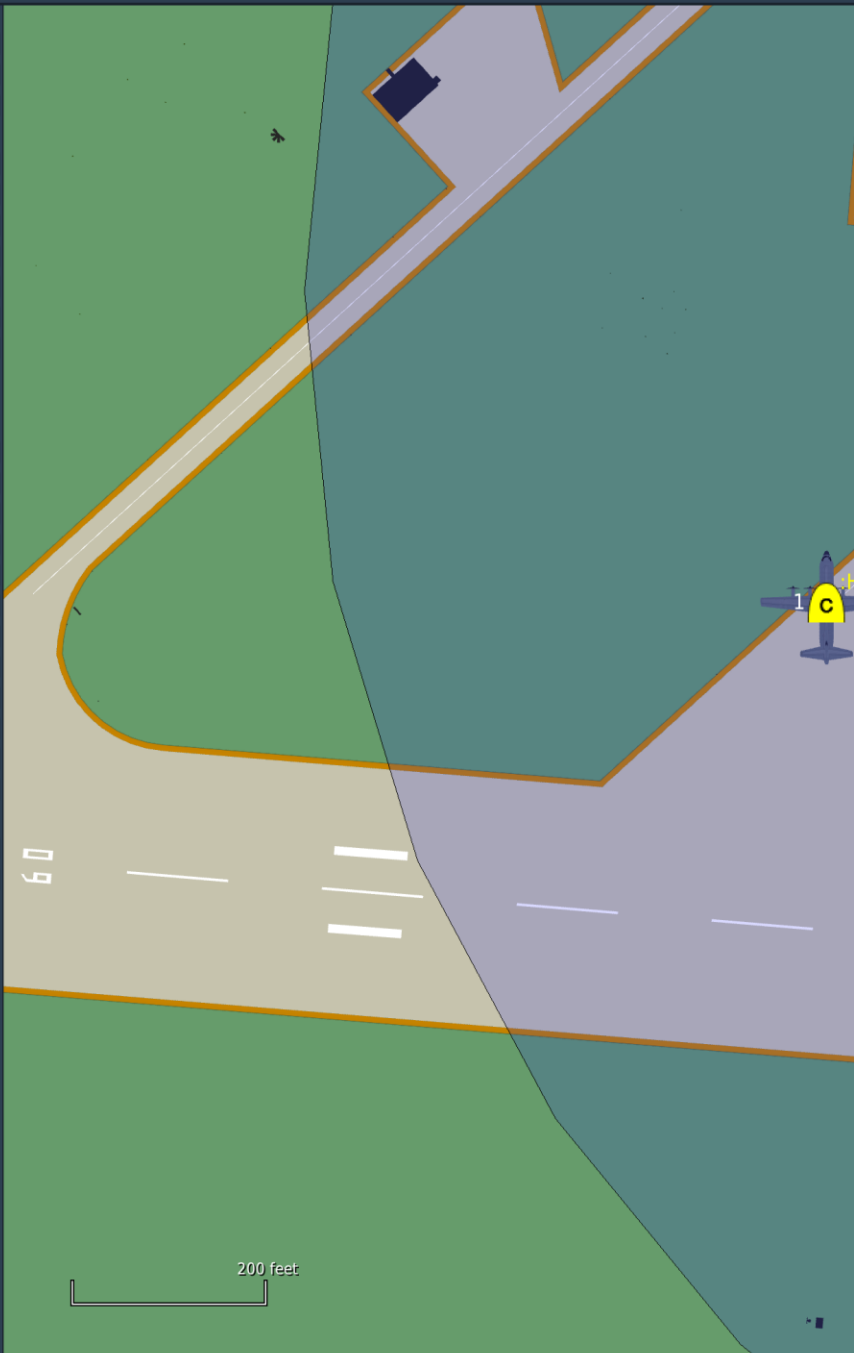
B < > 25

INITIALIZATION SCRIPT

OPEN

RESET

CODE



TRIGGERS

CLONE

^ v

CONDITIONS

CLONE

 $\wedge \vee$

ACTIONS

CLONE

^ v

4 MISSION START (CTLD)

NEW

DELETE

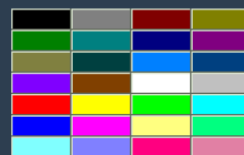
TYPE:

4 MISSION START

NAME:

CTLD

COLOR



G < > 25

B < > 25

INITIALIZATION SCRIPT

OPEN

RESET

CODE

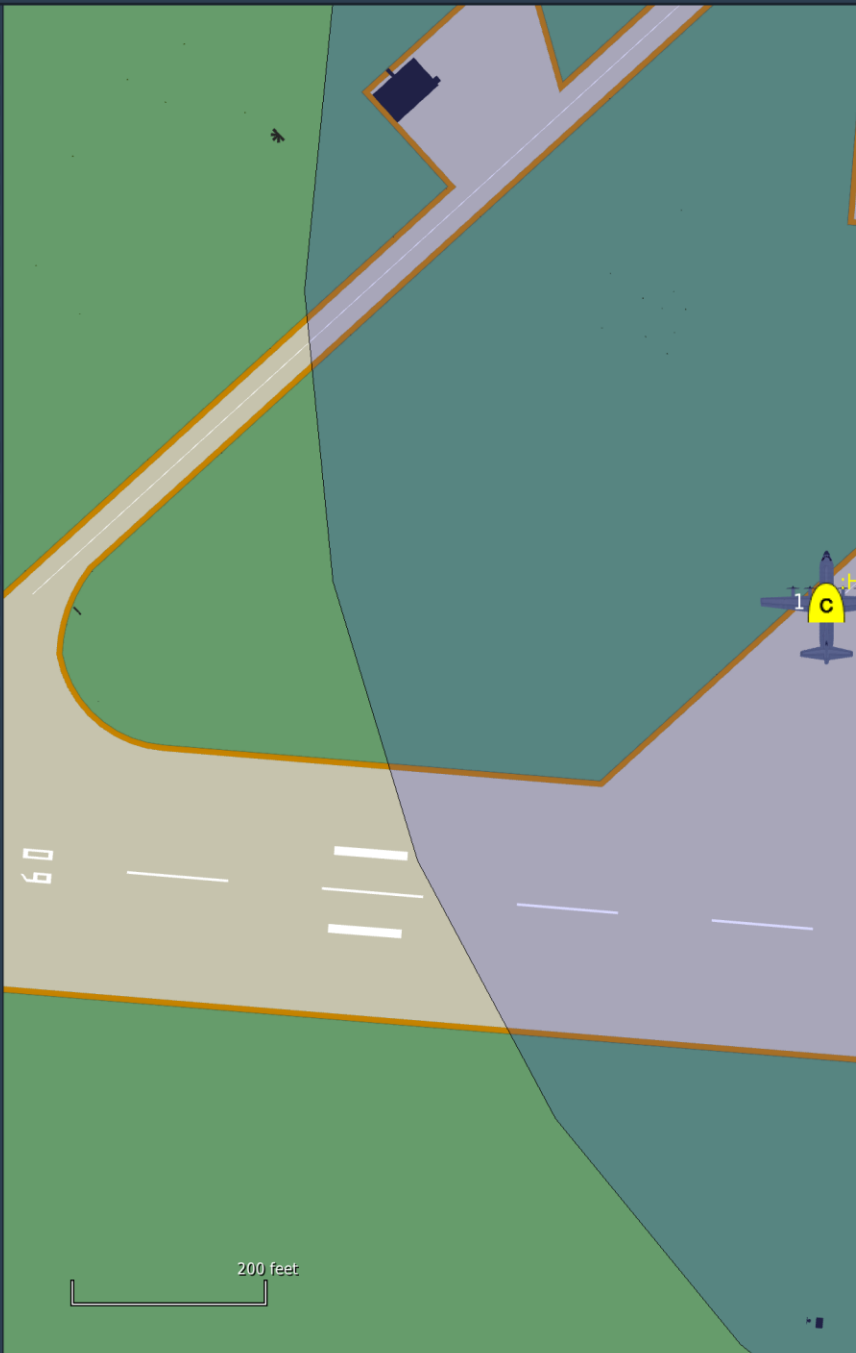
PAN/SELECT

MAP

SAT

ALT





TRIGGERS

CLONE

^ v

CONDITIONS

CLONE

ACTIONS

CLONE

^ v

4 MISSION START (CTLD)

NEW

DELETE

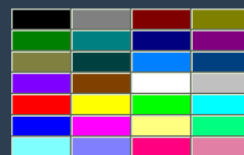
TYPE:

4 MISSION START

NAME:

Herc Cargo CTLD

COLOR



< > 128

< > 255

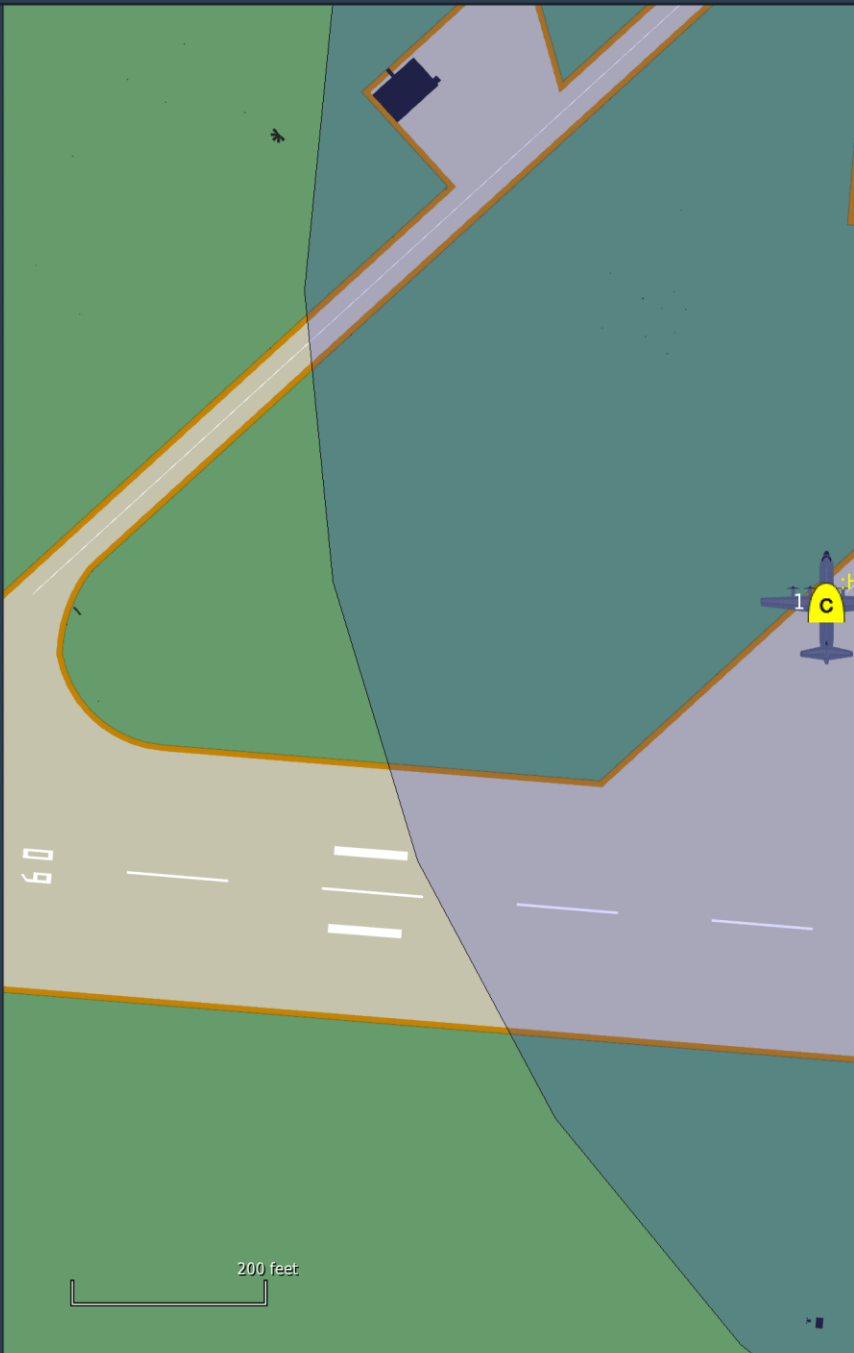
INITIALIZATION SCRIPT

OPEN

RESET

CODE

SCRIPT FILE (Hercules_Cargo_CTLD.lua)



TRIGGERS

CLONE

^ v

CONDITIONS

CLONE

ACTIONS

CLONE

^ v

4 MISSION START (MIST)

4 MISSION START (CTLD)

NEW

DELETE

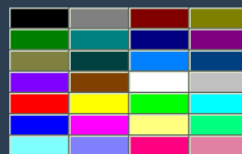
TYPE:

4 MISSION START

NAME:

Herc Cargo CTLD

COLOR



G < > 128

B < > 255

INITIALIZATION SCRIPT

OPEN

RESET

CODE

SCRIPT FILE (Hercules_Cargo_CTLD.lua)

ACTION:

DO SCRIPT FILE

FILE:

Hercules_Cargo_CTLD.lua

OPEN

Cargo_CTLD Menu Flow

